



CONSTRUCTION CEMENT
www.RapidSet.com

NEPPP

Chris Davis

Mark Connelly



CONSTRUCTION CEMENT
www.RapidSet.com

CTS Cement

- Specialty Cement Manufacturer
 - Rapid Set Cement
 - Type K Cement
 - System K
 - Special Mine Cement
-



CONSTRUCTION CEMENT
www.RapidSet.com





CONSTRUCTION CEMENT
www.RapidSet.com

What is Rapid Set?

- ❑ Rapid Set is a calcium sulfoaluminate cement
 - ❑ Rapid Set has little or no C3A, which increases sulfate resistance
 - ❑ Gains strength of 2500 to 3000 psi in 1.5 hours.
 - ❑ RS has very low shrinkage
-



CONSTRUCTION CEMENT
www.RapidSet.com

Dowel Bar





CONSTRUCTION CEMENT
www.RapidSet.com

Dowel Bar





CONSTRUCTION CEMENT
www.RapidSet.com

Dowel Bar





CONSTRUCTION CEMENT
www.RapidSet.com

Dowel Bar





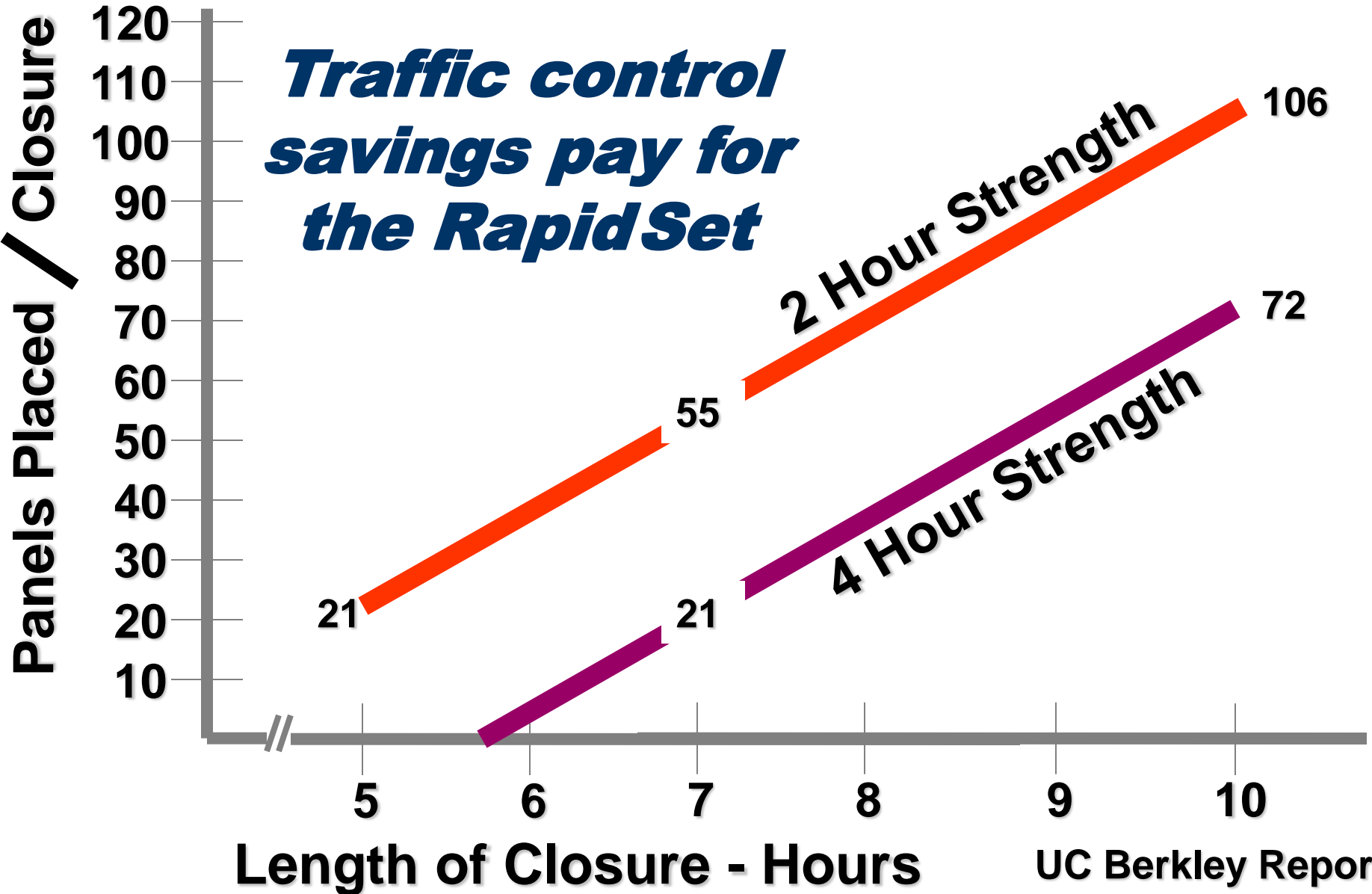
CONSTRUCTION CEMENT
www.RapidSet.com

Dowel Bar



Productivity 2 hour vs. 4 Hour Strength

Traffic control savings pay for the RapidSet





CONSTRUCTION CEMENT
www.RapidSet.com

Rt 295





CONSTRUCTION CEMENT
www.RapidSet.com

Rt 295





CONSTRUCTION CEMENT
www.RapidSet.com

Rt 295





CONSTRUCTION CEMENT
www.RapidSet.com

Rt 295





CONSTRUCTION CEMENT
www.RapidSet.com

Rt 295





CONSTRUCTION CEMENT
www.RapidSet.com

Rt 295





CONSTRUCTION CEMENT
www.RapidSet.com

Rt 295



Rapid Set[®]

CONSTRUCTION CEMENT
www.RapidSet.com

Lincoln Tunnel



Rapid Set[®]

CONSTRUCTION CEMENT
www.RapidSet.com

Lincoln Tunnel





CONSTRUCTION CEMENT
www.RapidSet.com

Lincoln Tunnel





CONSTRUCTION CEMENT
www.RapidSet.com





CONSTRUCTION CEMENT
www.RapidSet.com

Lincoln Tunnel





CONSTRUCTION CEMENT
www.RapidSet.com

Lincoln Tunnel





CONSTRUCTION CEMENT
www.RapidSet.com

Lincoln Tunnel





CONSTRUCTION CEMENT
www.RapidSet.com

Lincoln Tunnel





CONSTRUCTION CEMENT
www.RapidSet.com

Lincoln Tunnel





CONSTRUCTION CEMENT
www.RapidSet.com

Henry Hudson





CONSTRUCTION CEMENT
www.RapidSet.com

Henry Hudson





CONSTRUCTION CEMENT
www.RapidSet.com

Henry Hudson





CONSTRUCTION CEMENT
www.RapidSet.com

Henry Hudson





CONSTRUCTION CEMENT
www.RapidSet.com

Henry Hudson





CONSTRUCTION CEMENT
www.RapidSet.com

Air Force





Rapid Set[®]

CONSTRUCTION CEMENT
www.RapidSet.com

Air Force



Material Properties Ranking



Material	Compressive Strength	Slant Shear Bond Strength	Flexural Strength
SikaQuick 2500	H	H	H
Rapid Set DOT Mix	H	H	H
Premium Patch	H	M	H
HD-50 Rapid Set	H	H	M
10-61 Rapid Set	M	H	M
VersaSpeed	M	M	M
Futura 15	M	L	M
PavePatch 3000	L	M	M
PaveMend VR	M	L	L
PaveMend TR	L	L	L
Pavemend 15.0	L	L	L

Rapid Set®

CONSTRUCTION CEMENT
www.RapidSet.com

Air Force



Down-Selected Materials



Material	Compressive Strength	Slant Shear Bond Strength	Flexural Strength	Modulus of Elasticity	Coef. of Linear Thermal Expansion	Shrinkage
Rapid Set DOT Mix	H	H	H	M	M	M
10-61 Rapid Set	M	H	M	H	L	M
Futura 15	M	L	M	L	M	H
Pavemend 15.0	L	L	L	L	H	Expansive

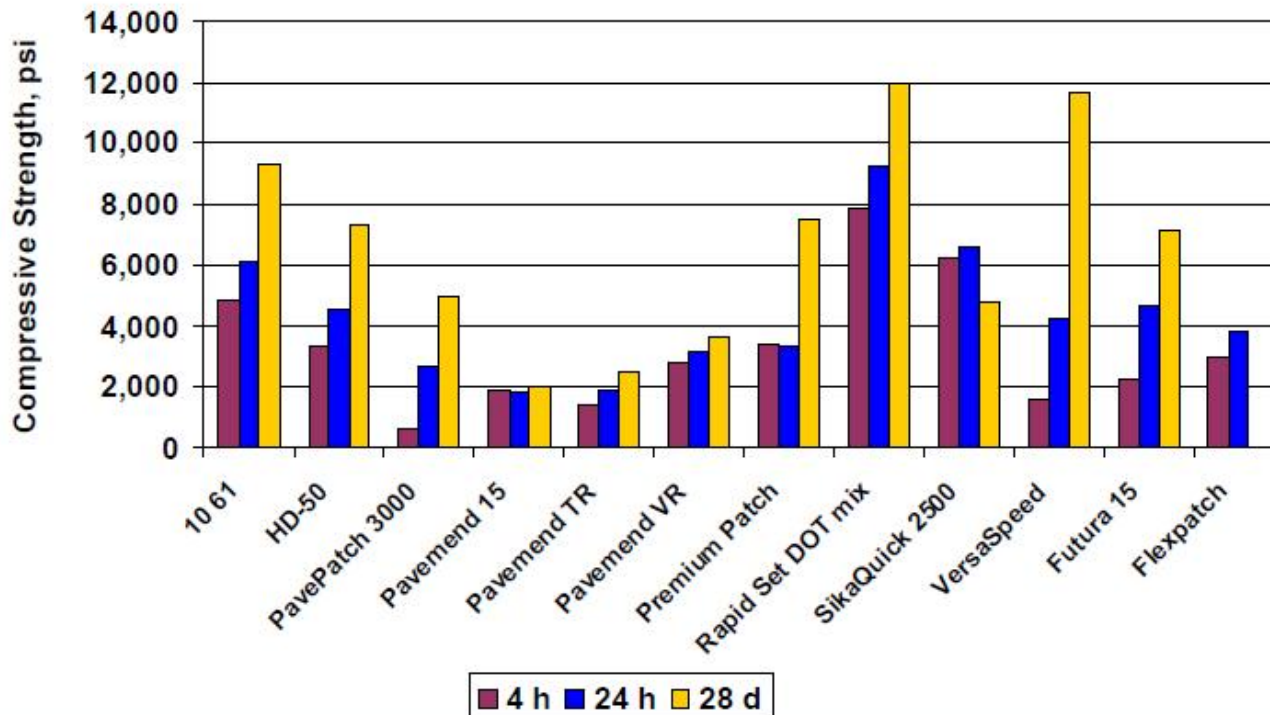
Rapid Set®

CONSTRUCTION CEMENT
www.RapidSet.com

Air Force



Compressive Strength





CONSTRUCTION CEMENT
www.RapidSet.com

Air Force





CONSTRUCTION CEMENT
www.RapidSet.com

Air Force





CONSTRUCTION CEMENT
www.RapidSet.com

Air Force





CONSTRUCTION CEMENT
www.RapidSet.com

Air Force





CONSTRUCTION CEMENT
www.RapidSet.com

Air Force





CONSTRUCTION CEMENT
www.RapidSet.com

Air Force





CONSTRUCTION CEMENT
www.RapidSet.com

Air Force





CONSTRUCTION CEMENT
www.RapidSet.com

Air Force





CONSTRUCTION CEMENT
www.RapidSet.com

Atlanta





CONSTRUCTION CEMENT
www.RapidSet.com

Atlanta





CONSTRUCTION CEMENT
www.RapidSet.com

Atlanta





CONSTRUCTION CEMENT
www.RapidSet.com

Atlanta





CONSTRUCTION CEMENT
www.RapidSet.com

Atlanta





CONSTRUCTION CEMENT
www.RapidSet.com

Atlanta





CONSTRUCTION CEMENT
www.RapidSet.com

Atlanta





CONSTRUCTION CEMENT
www.RapidSet.com

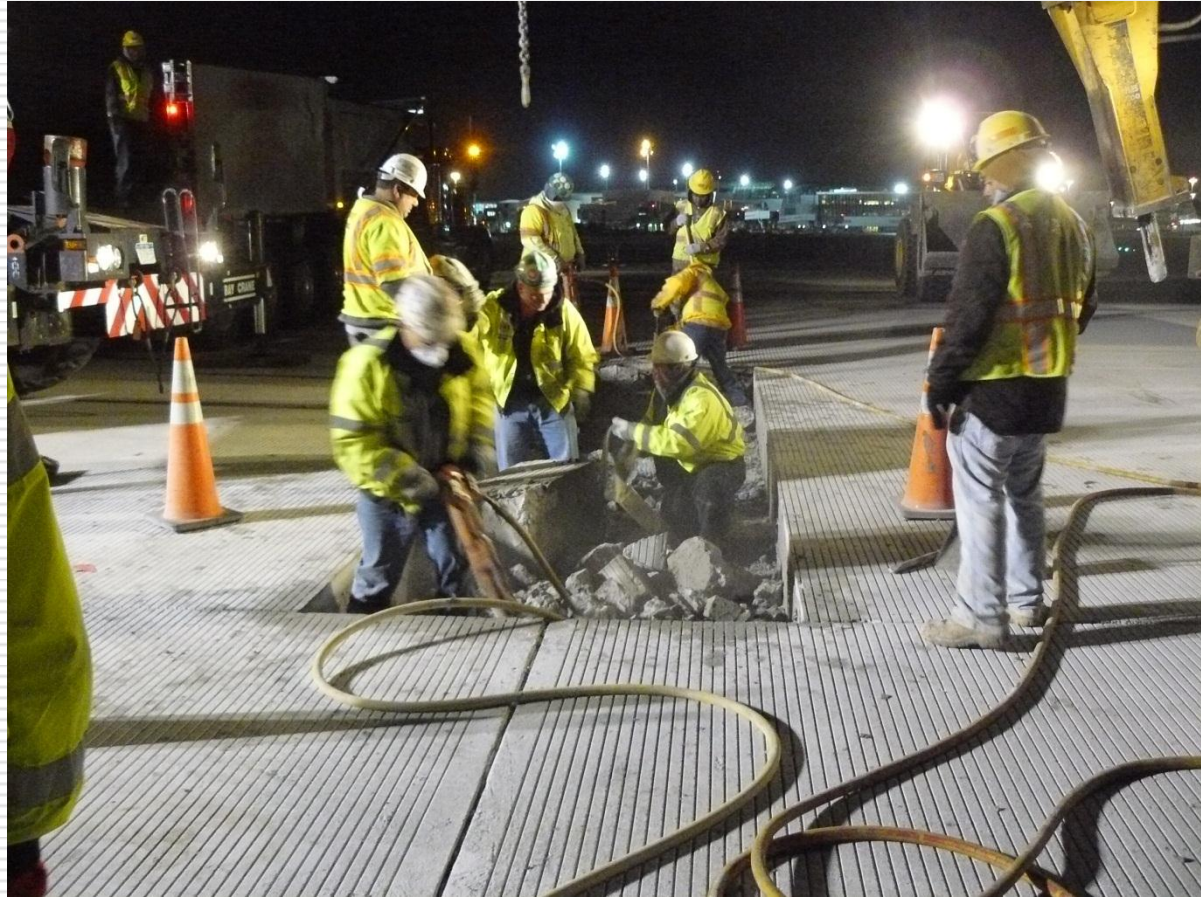
Atlanta





CONSTRUCTION CEMENT
www.RapidSet.com

Kennedy Airport





CONSTRUCTION CEMENT
www.RapidSet.com

Kennedy Airport





CONSTRUCTION CEMENT
www.RapidSet.com

Kennedy Airport





CONSTRUCTION CEMENT
www.RapidSet.com

Kennedy Airport





CONSTRUCTION CEMENT
www.RapidSet.com

Kennedy Airport





CONSTRUCTION CEMENT
www.RapidSet.com

Kennedy Airport





CONSTRUCTION CEMENT
www.RapidSet.com

Kennedy Airport





CONSTRUCTION CEMENT
www.RapidSet.com

Kennedy Airport





CONSTRUCTION CEMENT
www.RapidSet.com

Kennedy Airport





CONSTRUCTION CEMENT
www.RapidSet.com

Kennedy Airport





CONSTRUCTION CEMENT
www.RapidSet.com

Kennedy Airport





CONSTRUCTION CEMENT
www.RapidSet.com

Kennedy Airport





CONSTRUCTION CEMENT
www.RapidSet.com

Kennedy Airport





CONSTRUCTION CEMENT
www.RapidSet.com

Kennedy Airport





CONSTRUCTION CEMENT
www.RapidSet.com

Kennedy Airport



Rapid Set Concrete Hartsfield Airport Atlanta

<u>Date</u>	<u>Time</u>	<u>Compressive</u>	<u>Flexural</u>	<u>Ambient</u>	<u>Concrete</u>
10/28/2011	4 HR	7562	615	57	70
		7271	605		
	8 HR	8481	700		
		8498	710		
	24 HR	8132	685		
		8428	705		
10/29/2011	2 HR	6241	525	47	75
	4 HR	6629	555		
		6626	550		
	8 HR	7996	665		
		8426	695		
	24 HR	8749	730		
		8568	715		
10/30/2011	2 HR	5574	460	46	63
	3 HR	6587	545		
	4 HR	7182	595		
	8 HR	7930	660		
		8174	675		
	24 HR	8796	740		
		8850	740		
10/31/2011	2 HR	6104	505	42	70
	3 HR	5933	500		
	4 HR	7514	620		
	8 HR	9081	750		
		9228	755		



CONSTRUCTION CEMENT
www.RapidSet.com

Questions?

